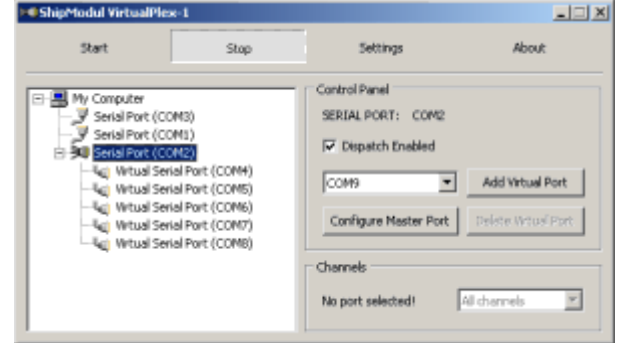


VirtualPlex-1



Introduction

The VirtualPlex-1 utility creates multiple virtual serial ports from an existing serial port and dispatches incoming NMEA data from the existing port to the newly created ports. This enables multiple applications to use the NMEA data at the same time. The use of VirtualPlex-1 is not limited to our range of multiplexers, it can be used with any NMEA device connected to a serial port, like a GPS, as long as the device uses standard NMEA sentences.

Operation

Operation is very straightforward. The left pane show the serial ports that are found on your computer. On the right is the control panel where you can add or delete virtual ports and make other settings.

To setup VirtualPlex-1, take the following steps:

- Use your mousepointer to select a port you wish to share amongst multiple applications. This is the **Master Port**.
- In the control panel, click on **Add Virtual Port** as many times as you need ports.
- Optionally, configure the **Master Port** by clicking the **Configure Master Port** button. Normally this step is not needed since the configuration defaults to the NMEA standard of 4800 bps, 8N1.
- Check **Dispatch Enabled** to enable the dispatch of incoming data on the **Master Port** to the **Virtual Ports**.
- Open the **Settings** dialog with the **Settings** button on the top of the window. For completely automatic operation, check all options to automatically start VirtualPlex-1 whenever you log on to your computer, and exit with the **Save Settings** button.
- Press the **Start** button to start operation of VirtualPlex-1. You can now minimize it's window.
- The **Channels** panel is for future versions of our multiplexers. Leave the settings unchanged (All Channels).

Once running, the **Master Port** is unavailable to other applications. You should configure your applications to use one of the virtual ports created by VirtualPlex-1.

Registration

The free VirtualPlex-1 demo can be converted into a permanent version by purchasing a license for €49,---. The free demo can be downloaded [here](#). To register, visit our [registration](#) page.

Note: VirtualPlex-1 runs on Windows NT4, 2000 and XP only.